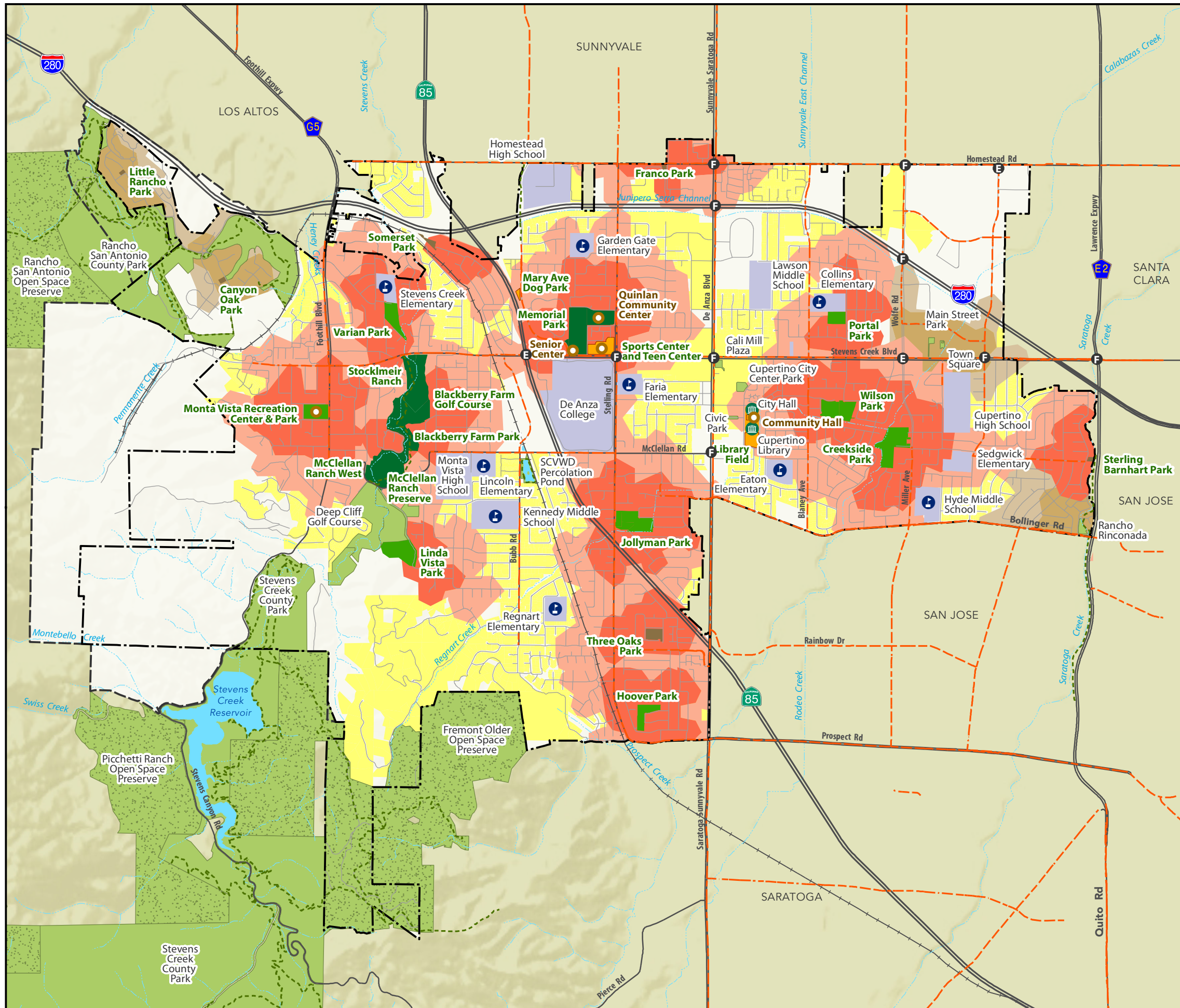




# Parks & Recreation System Master Plan

CUPERTINO

## Map 1A: Nearby Park Access (Draft)



### Park Access Service Areas

- Within 1/4 Mile Walking/Biking Distance
- Within 1/2 Mile Walking/Biking Distance

### Other Parks with Neighborhood Facilities

- Within 1/4 Mile Walking/Biking Distance
- Within 1/2 Mile Walking/Biking Distance
- Unserviced Residential Areas Beyond 1/2-Mile Service Area (Residential Zoning Districts, Excluding Uninhabited Properties)

### Park and Recreation Facilities

#### Cupertino Parks and Recreation Facilities

- Community Parks
- Large Neighborhood Parks
- Small Neighborhood Parks
- Special Use Sites

#### Other Recreation Resources

- Park & Recreation Resources
- Open Space Preserves
- Schools and Colleges

### Trail Corridors and Bike Facilities

- Trail Corridors
- Class II Bike Lane

### Recreation Centers/Fields

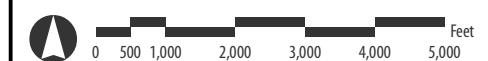
- Recreation Centers/Facilities
- Other Facilities
- School Sport Fields Managed by City

### Cupertino General Plan 2040 Signalized Intersections Level of Service (LOS)

- LOS E
- LOS F

### Base Map Features

- Cupertino City Boundary
- Cupertino Sphere of Influence \*
- Railroad
- Creeks and Channels
- Water Bodies



July 2017



Note: \* per Local Agency Formation Commission  
Sources: City of Cupertino and Santa Clara County, 2017.

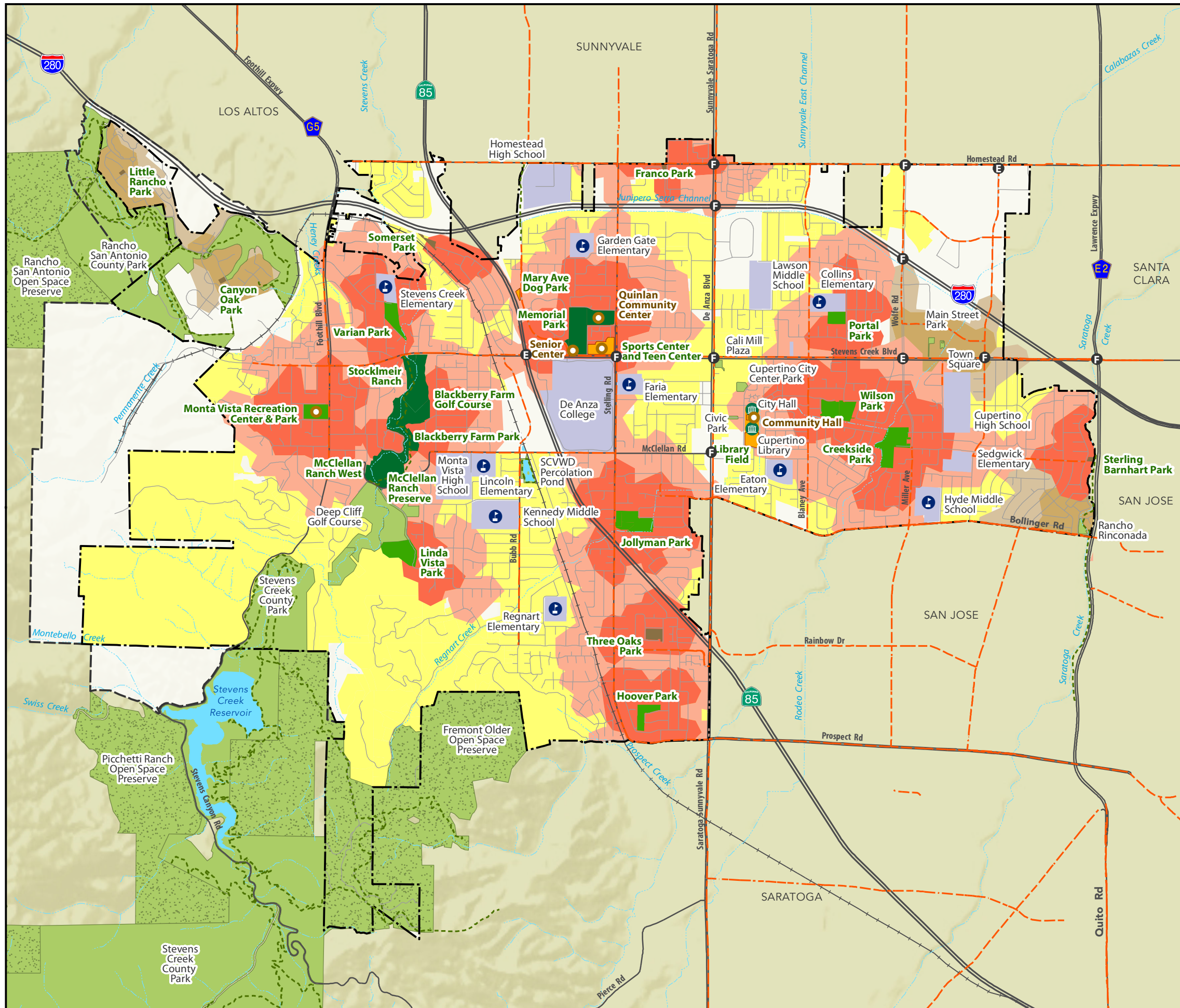




# Parks & Recreation System Master Plan

CUPERTINO

## Map 1B: Nearby Park Access (Draft)



### Park Access Service Areas

- Within 1/4 Mile Walking/Biking Distance
- Within 1/2 Mile Walking/Biking Distance

### Other Parks with Neighborhood Facilities

- Within 1/4 Mile Walking/Biking Distance
- Within 1/2 Mile Walking/Biking Distance
- Unserviced Residential Areas Beyond 1/2-Mile Service Area (Residential Zoning Districts)

### Park and Recreation Facilities

#### Cupertino Parks and Recreation Facilities

- Community Parks
- Large Neighborhood Parks
- Small Neighborhood Parks
- Special Use Sites

#### Other Recreation Resources

- Park & Recreation Resources
- Open Space Preserves
- Schools and Colleges

### Trail Corridors and Bike Facilities

- Trail Corridors
- Class II Bike Lane

### Recreation Centers/Fields

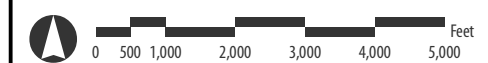
- Recreation Centers/Facilities
- Other Facilities
- School Sport Fields Managed by City

### Cupertino General Plan 2040 Signalized Intersections Level of Service (LOS)

- LOS E
- LOS F

### Base Map Features

- Cupertino City Boundary
- Cupertino Sphere of Influence \*
- Railroad
- Creeks and Channels
- Water Bodies



July 2017



Note: \* per Local Agency Formation Commission  
Sources: City of Cupertino and Santa Clara County, 2017.

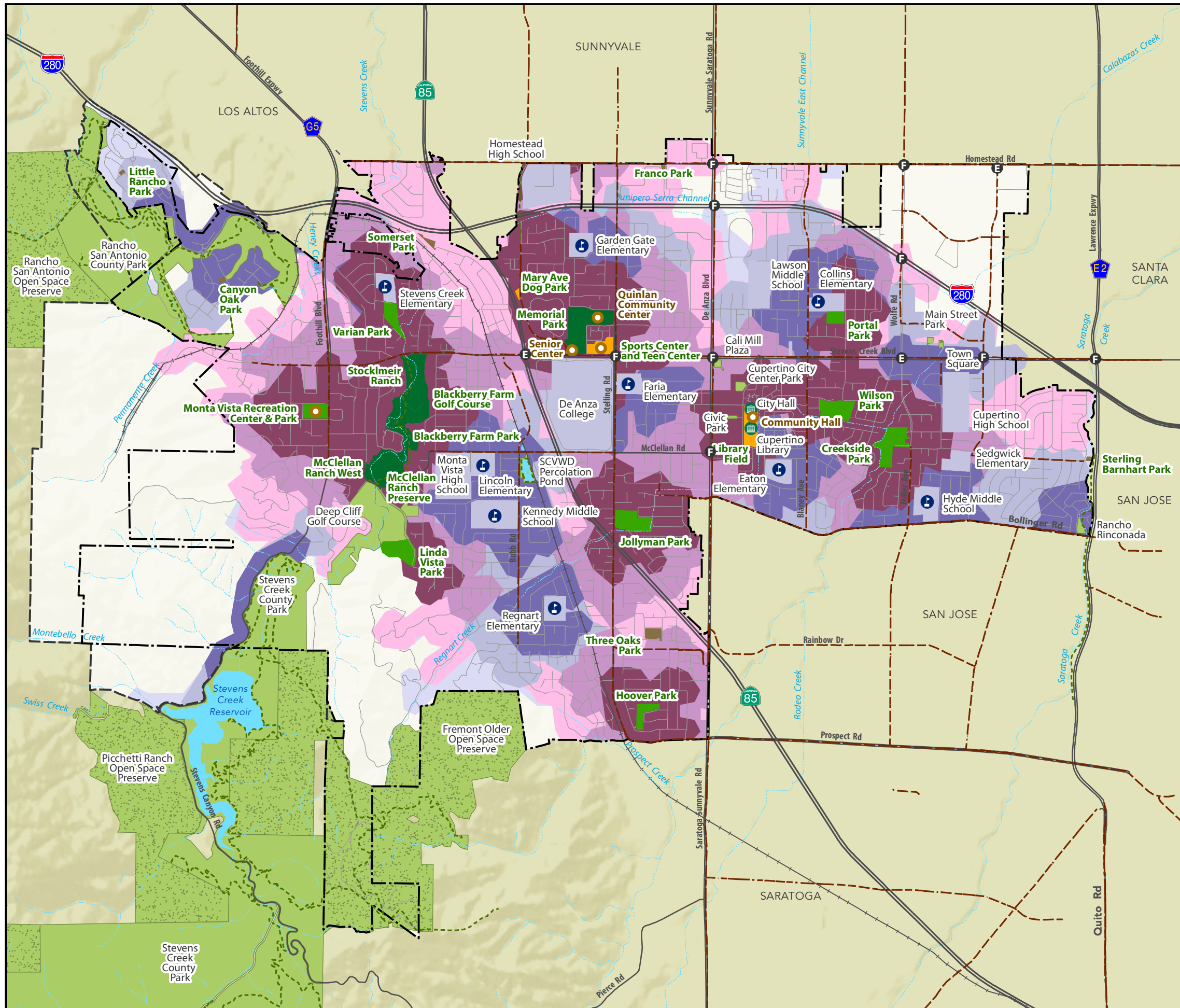




# Parks & Recreation System Master Plan

## CUPERTINO

### Map 2: Access to Parks with Specialized Facilities (Draft)



- City Park Access Service Areas**
- Within 1/4 Mile Walking/Biking Distance
  - Within 1/2 Mile Walking/Biking Distance
  - Within 1 Mile Walking/Biking Distance

- Non-City Park Access Service Areas**
- Within 1/4 Mile Walking/Biking Distance
  - Within 1/2 Mile Walking/Biking Distance
  - Within 1 Mile Walking/Biking Distance

- Park and Recreation Facilities**
- Cupertino Parks and Recreation Facilities*
- Community Parks
  - Large Neighborhood Parks
  - Small Neighborhood Parks
  - Special Use Sites

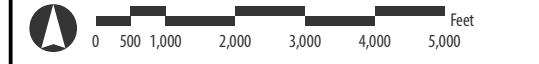
- Other Recreation Resources**
- Park & Recreation Resources
  - Open Space Preserves
  - Schools and Colleges

- Trail Corridors and Bike Facilities**
- Trail Corridors
  - Class II Bike Lane

- Recreation Centers/Fields**
- Recreation Centers/Facilities
  - Other Facilities
  - School Sport Fields Managed by City

- Cupertino General Plan 2040 Signalized Intersections Level of Service (LOS)**
- LOS E
  - LOS F

- Base Map Features**
- Cupertino City Boundary
  - Cupertino Sphere of Influence \*
  - Railroad
  - Creeks and Channels
  - Water Bodies



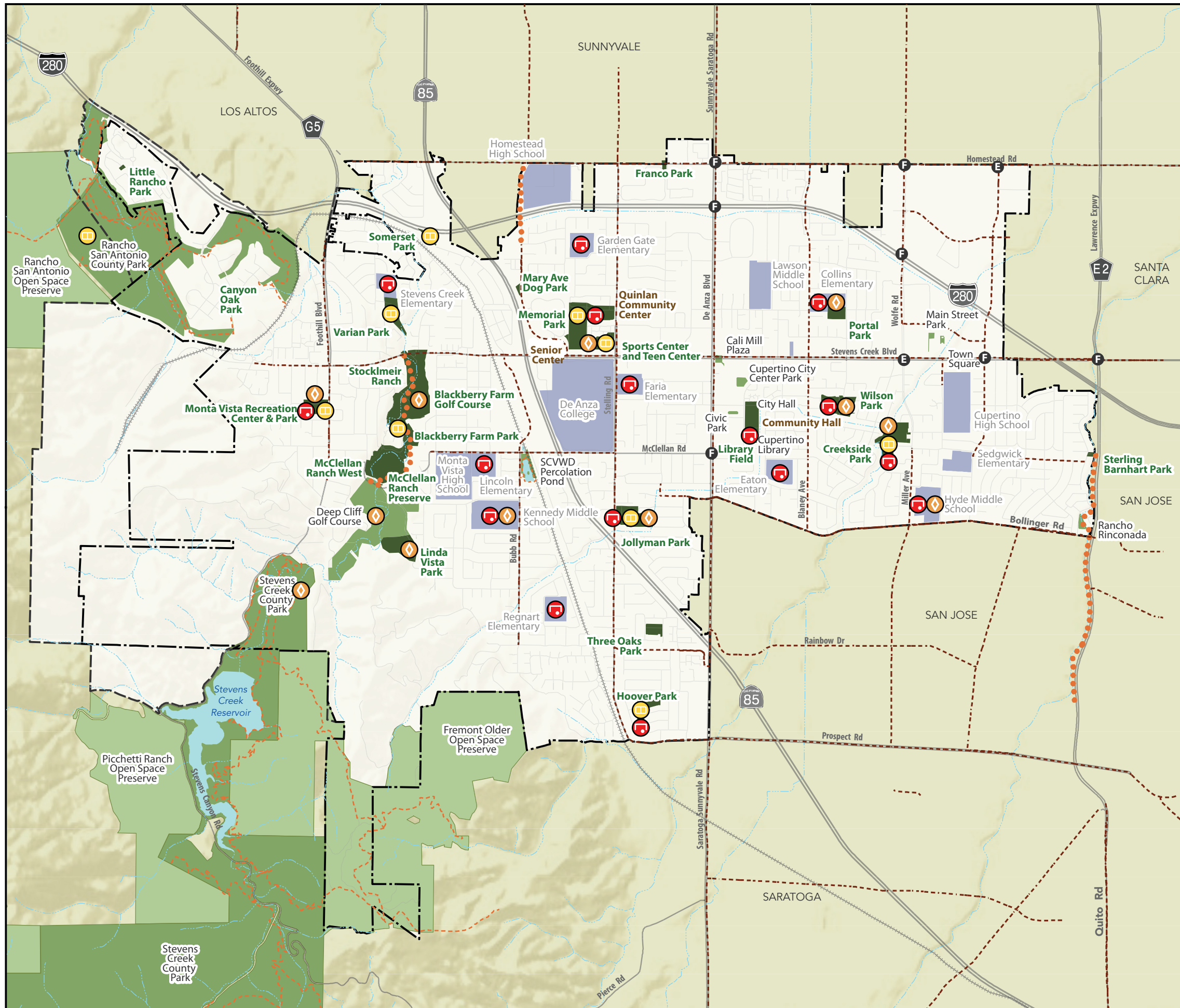




# Parks & Recreation System Master Plan

CUPERTINO

## Map 3: Active Recreation Facility Distribution (Draft)



### Park and Open Spaces

- City Parks
- Non-City Parks
- Open Space Preserves
- Schools and Colleges

### Trails and Bike Facilities

- City Trails
- Non-City Trails
- Class II Bike Lane

### Recreation Facilities

- Sports Fields
- Sports Courts
- Other (Golf, Batting Cages, Fitness Center, Track...)

### Base Map Features

- Cupertino City Boundary
- Cupertino Sphere of Influence \*
- Railroad
- Creeks and Channels
- Water Bodies

### Cupertino General Plan 2040 Signalized Intersections Level of Service (LOS) Based on Average Delay

- LOS E: High delay, limit of acceptable range
- LOS F: Unacceptable level of delay, high volume to capacity ratio



June 2017

M I G Note: \* per Local Agency Formation Commission Sources: City of Cupertino and Santa Clara County, 2017.

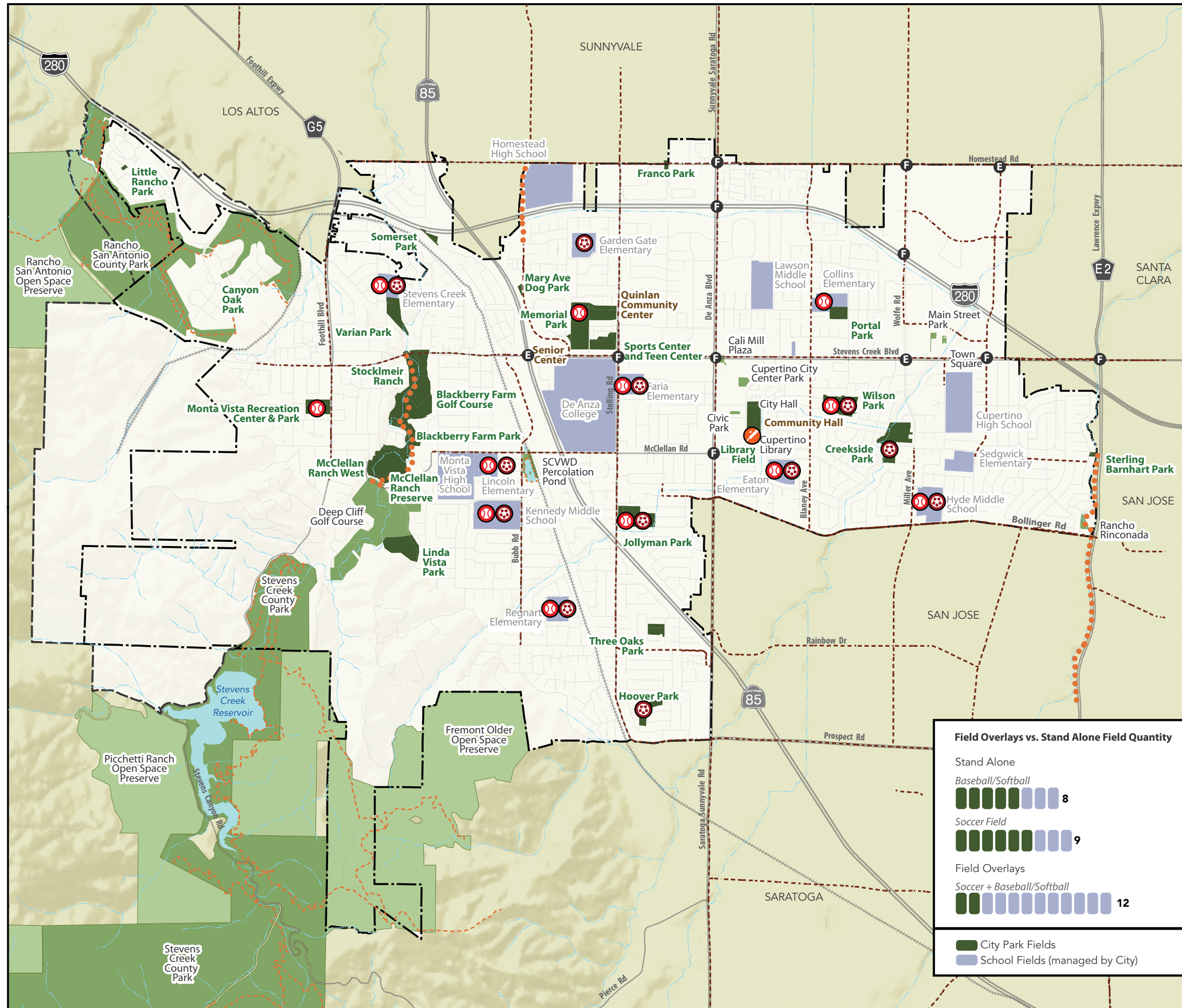




# Parks & Recreation System Master Plan

CUPERTINO

## Map 4: Sports Fields Facility Distribution (Draft)

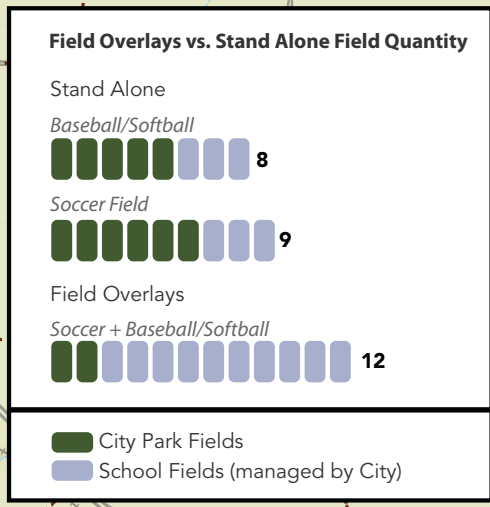


- Park and Open Spaces**
- City Parks
  - Non-City Parks
  - Open Space Preserves
  - Schools and Colleges

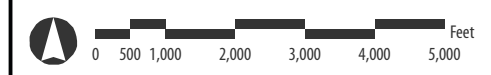
- Trails and Bike Facilities**
- City Trails
  - Non-City Trails
  - Class II Bike Lane

- Recreation Field Types**
- Baseball/Softball
  - Soccer
  - Cricket

- Base Map Features**
- Cupertino City Boundary
  - Cupertino Sphere of Influence \*
  - Railroad
  - Creeks and Channels
  - Water Bodies



- Cupertino General Plan 2040 Signalized Intersections Level of Service (LOS) Based on Average Delay**
- LOS E: High delay, limit of acceptable range
  - LOS F: Unacceptable level of delay, high volume to capacity ratio



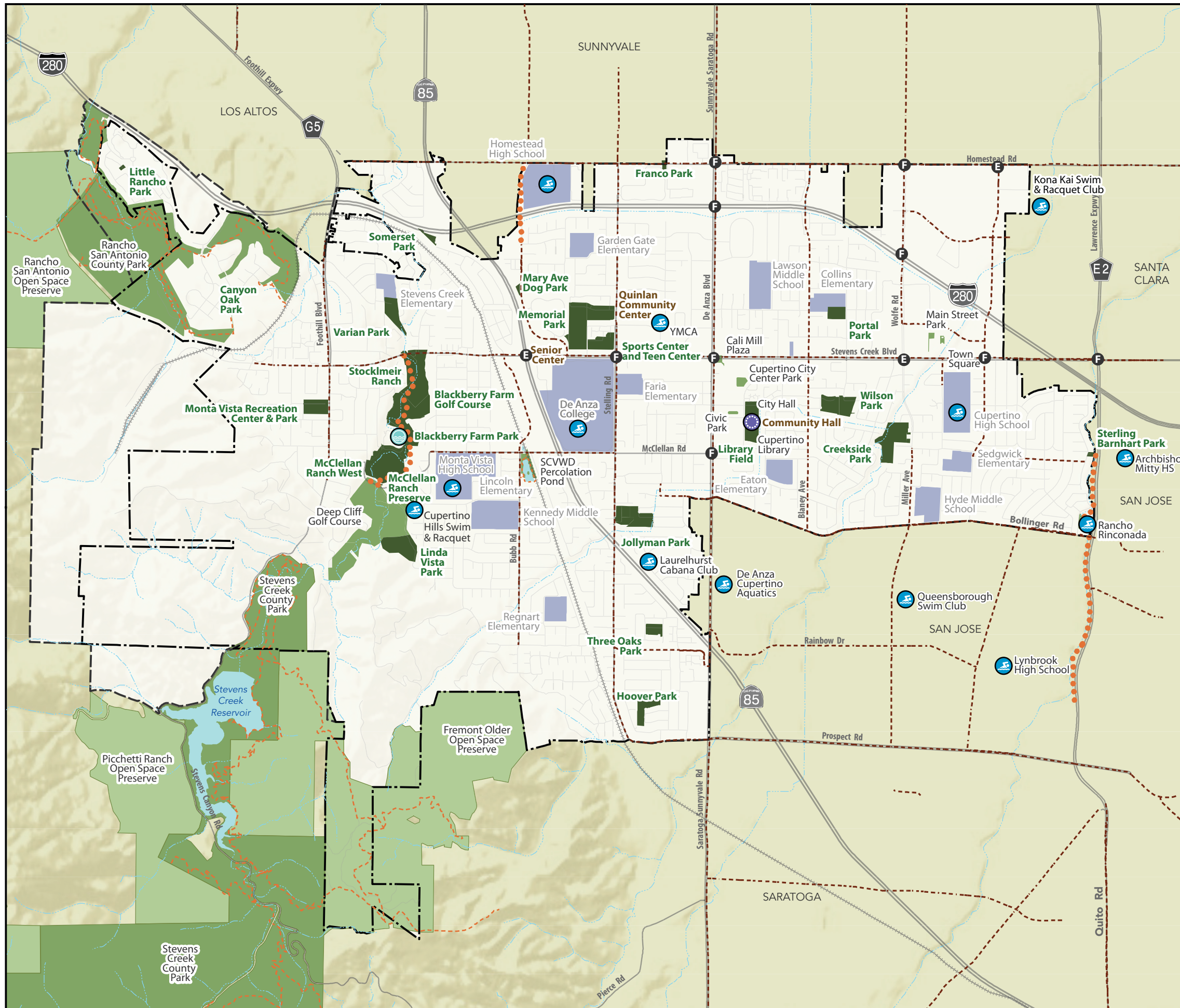




# Parks & Recreation System Master Plan

CUPERTINO

## Map 5: Aquatics & Waterplay Facility Distribution (Draft)



### Park and Open Spaces

- City Parks
- Non-City Parks
- Open Space Preserves
- Schools and Colleges

### Trails and Bike Facilities

- City Trails
- Non-City Trails
- Class II Bike Lane

### Aquatic Facilities & Waterplay Features

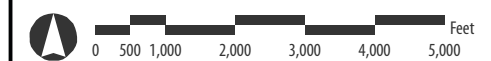
- City Pools
- Non-City Pools
- Sprayground

### Base Map Features

- Cupertino City Boundary
- Cupertino Sphere of Influence \*
- Railroad
- Creeks and Channels
- Water Bodies

### Cupertino General Plan 2040 Signalized Intersections Level of Service (LOS) Based on Average Delay

- LOS E: High delay, limit of acceptable range
- LOS F: Unacceptable level of delay, high volume to capacity ratio



June 2017

M I G Note: \* per Local Agency Formation Commission Sources: City of Cupertino and Santa Clara County, 2017.

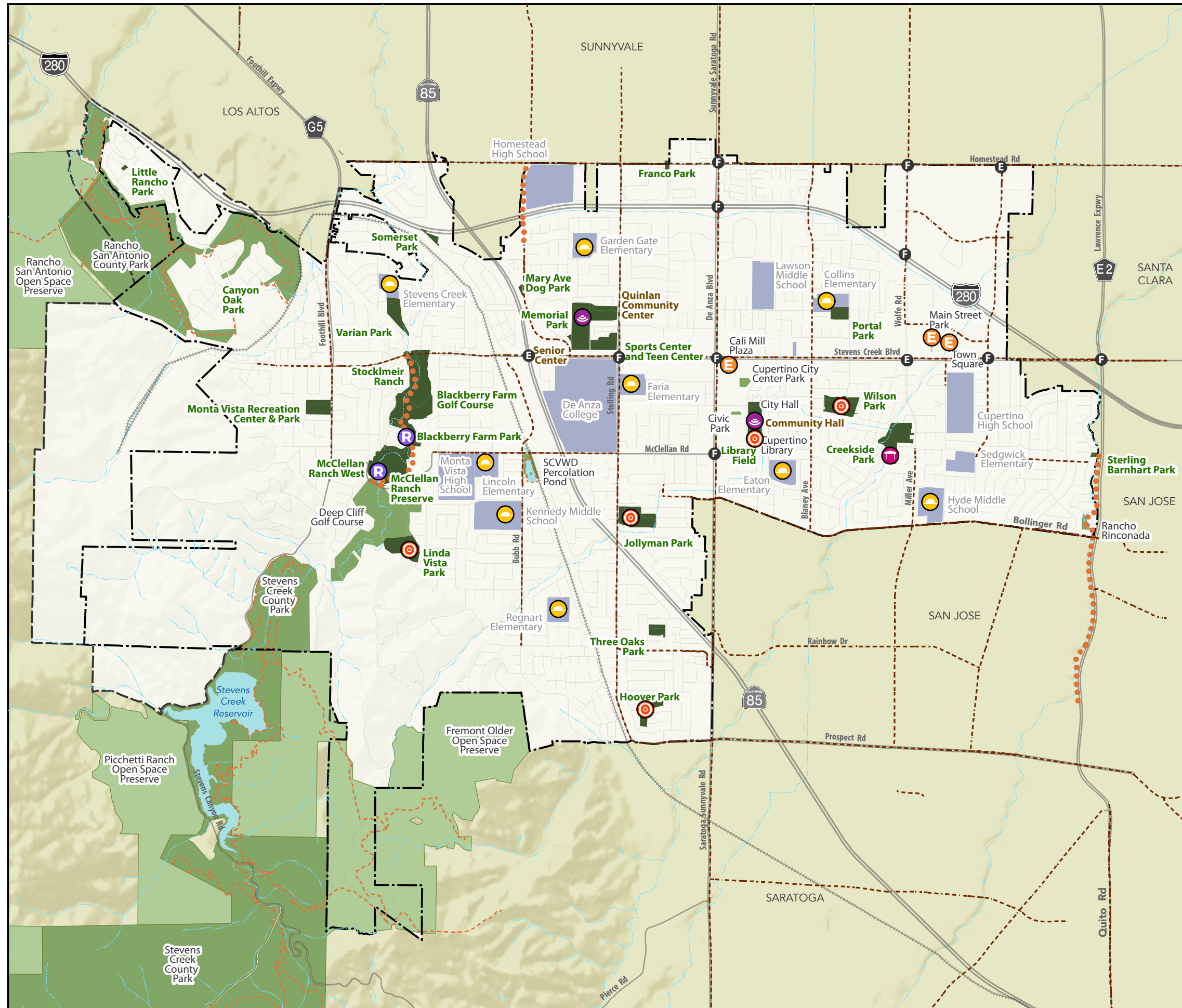




# Parks & Recreation System Master Plan

CUPERTINO

## Map 6: Outdoor Event Space Distribution (Draft)



### Park and Open Spaces

- City Parks
- Non-City Parks
- Open Space Preserves
- Schools and Colleges

### Trails and Bike Facilities

- City Trails
- Non-City Trails
- Class II Bike Lane

### Existing & Potential Event Spaces

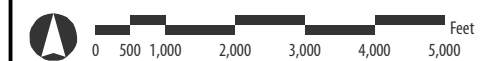
- Large Event Space - Existing
- Small Event Space - Existing
- Restricted Event Space - Existing
- Potential Event Space in Parks
- Potential Event Space at School Sites
- Potential Event Space at Other Sites

### Base Map Features

- Cupertino City Boundary
- Cupertino Sphere of Influence \*
- Railroad
- Creeks and Channels
- Water Bodies

### Cupertino General Plan 2040 Signalized Intersections Level of Service (LOS) Based on Average Delay

- LOS E: High delay, limit of acceptable range
- LOS F: Unacceptable level of delay, high volume to capacity ratio



June 2017

Note: \* per Local Agency Formation Commission  
Sources: City of Cupertino and Santa Clara County, 2017.

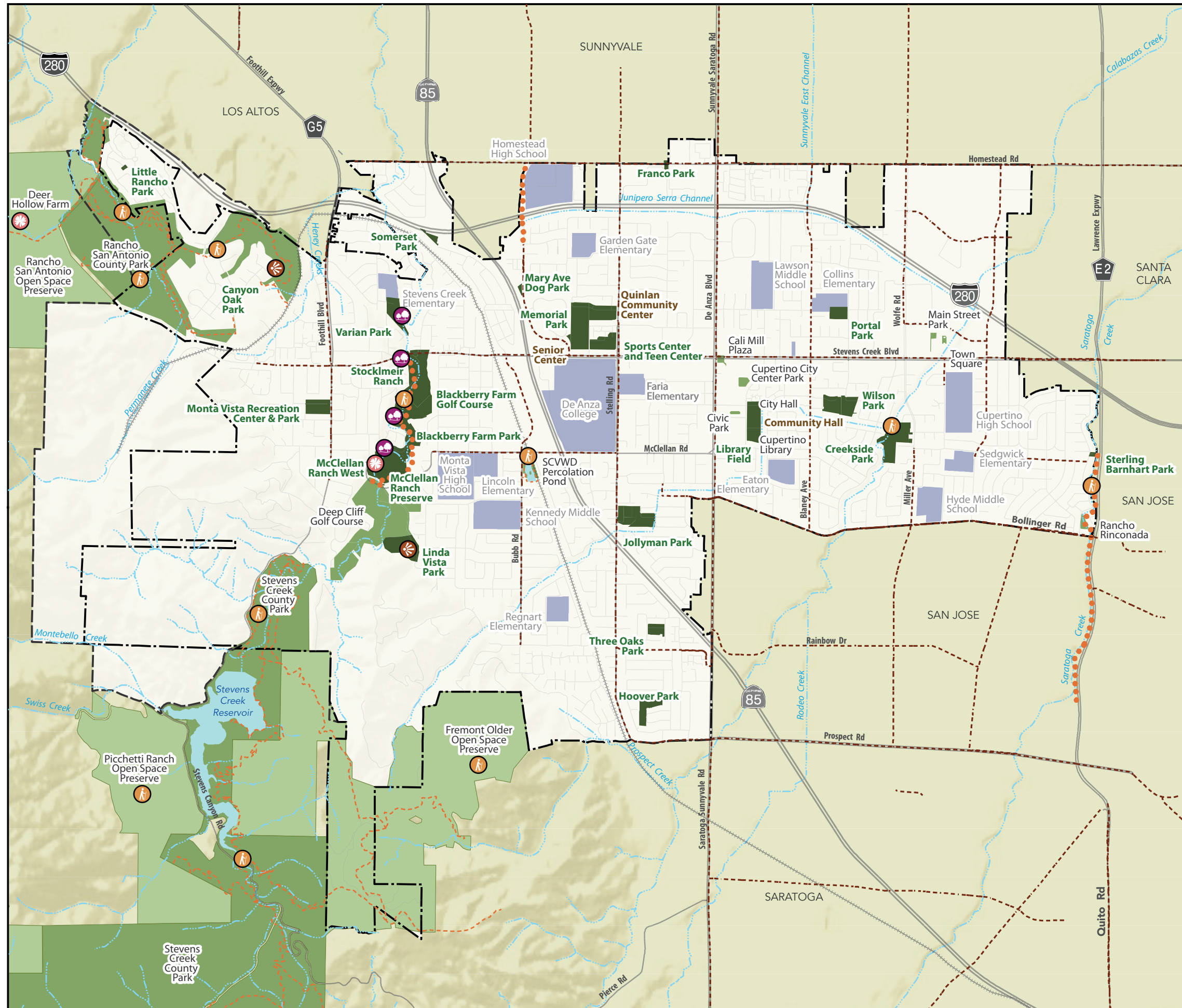




# Parks & Recreation System Master Plan

CUPERTINO

## Map 7: Access to Nature (Draft)



### Park and Open Spaces

- City Parks
- Non-City Parks
- Open Space Preserves
- Schools and Colleges

### Trails and Bike Facilities

- City Trails
- Non-City Trails
- Class II Bike Lane

### Existing Natural Features

- Community Garden or Orchard
- Environmental Education/Interpretive Amenities & Facilities
- Visual Access
- Nature & Creek Trails

### Base Map Features

- Cupertino City Boundary
- Cupertino Sphere of Influence \*
- Railroad
- Creeks and Channels
- Water Bodies



June 2017



Note: \* per Local Agency Formation Commission  
Sources: City of Cupertino and Santa Clara County, 2017.